

# Riverstone InfoTech

Product Design, E-Catalog, E-Commerce,  
Enterprise Solutions & Furniture Specifications

---

Comprehensive Services for the Commercial Furniture Industry

# Brief Introduction

2000  
Founded



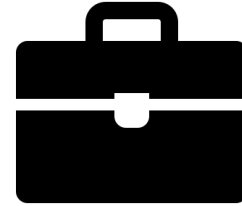
Riverstone was founded in 2000 in the United States, and quickly expanded to India in 2001.

Team of  
100+



Riverstone is a company with its culture and focus firmly on its team

20+ years of  
Experience



Information  
Technology &  
Design

02  
Locations



Pleasanton, CA  
&  
Chennai, India

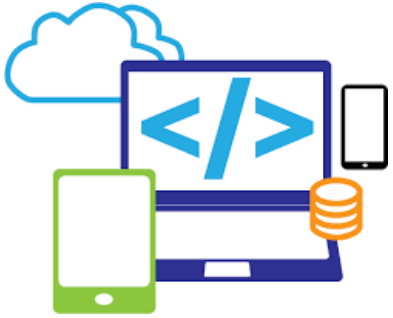
## Who We Are

CMMI Level 3 & ISO 9001 certified company proficient in IT Solutions and Design Services founded in 2000.

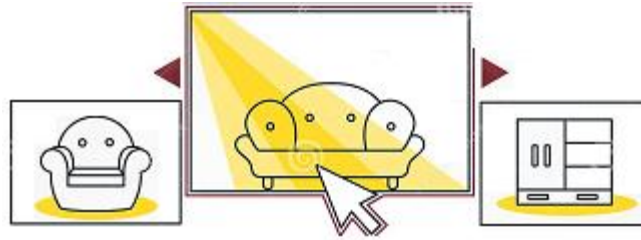
## What We Do

- Product Design / Model Creation
- Furniture & Architectural Products
- Design & Specifications
- 3D Visualization / Rendering
- Electronic Catalog Creation
- Configura CET Extension
- MRL Binder Creation
- BIM Object Creation

# Challenges Faced in Today's Furniture Space



Evolving Technology



Online Sales



Design Resource Availability



Project Cost



Design Quality



Business Scalability

# Where we can help

## Product Specifications

- Furniture Space Planning
- 2D & 3D Furniture Layouts
- Complete Product Specifications
- Furniture Pricing for Bid
- Architectural Walls

## Specialty Services

- Quality Check
- Fabric COM Calculation
- Furniture Installation Drawings
- Value-engineered Design
- Re-configuration Design

## Visualization

- Photo-Realistic Renders
- VR Renders / 360 Panorama
- Animation & Fly-Through
- Re-configuration Animation
- SketchUp & Photo-montage Renders

## Product Design and Models

- Manufacturer Specials
- 2D & 3D Model & Smart Symbols
- Custom Product Design
- Revit Plan/ Elevation/ Section
- Revit Modelling/ Family Creation

**AIS** WE'RE ON IT. **Allsteel** **arcadia** **FRÖVI** **Fōm** **core**  
SERVE. CREATE. INSPIRE.

**global** **GROUPE LACASSE** **Gunlocke** **MillerKnoll** **HAWORTH**

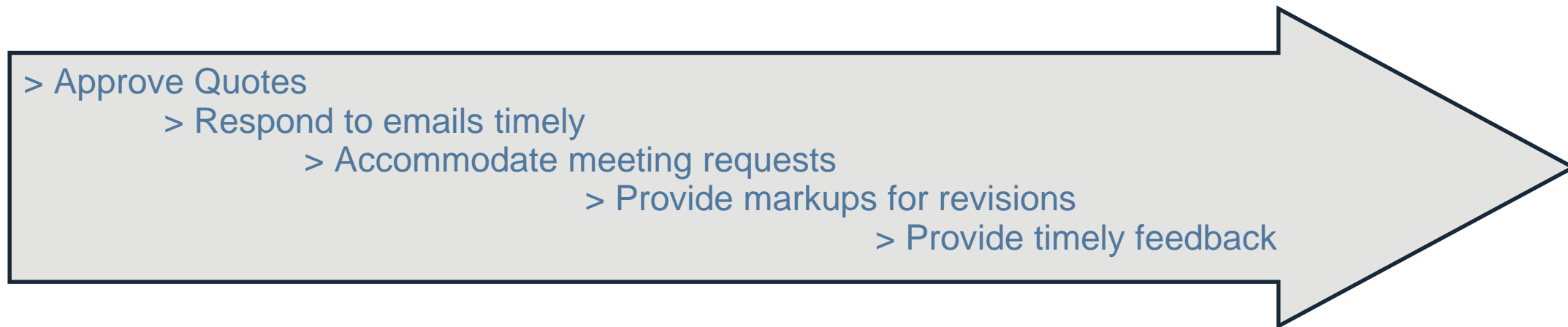
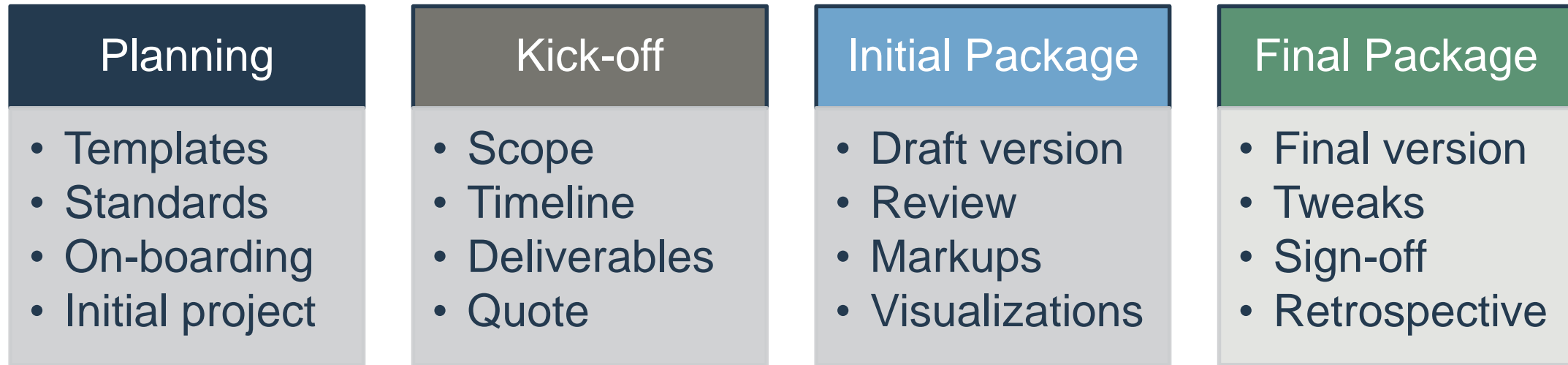
**HON.** **interstuhl** **IRON AGE | OFFICE** **MRL MY RESOURCE LIBRARY**

**maars** **LIVING WALLS®** **NATIONAL.** **L A Z BOY®** **HEALTHCARE** **KNÚ®**

**ghent.** **zilenzio** **SMARTER FURNISHINGS**  
a GMI company. *Rest easy!*

# Our Customers

# Engagement Model



**Project request form (optional):**  
[Design / Render Forms](#)

**Submit projects / requests to:**  
E-mail: [cadteam@riverstonetech.com](mailto:cadteam@riverstonetech.com)

# Project Input & Deliverables

## Input / Requirements

- Project Bid / Specifications
- Floor Plan / CAD Drawing
- Product Catalog & Pricing
- Double Check request
- Completed Specifications
- Reconfiguration - Existing Inventory
- Rendering - Finish details
- VR – Areas to render
- Animation - Story board
- Fly-Through - Camera path



## Deliverables

- Initial & Final Package
- 2D, 3D, SIF, Renders & PDF's
- Redrawn CAD plan (if done)
- Thorough QC & Notes
- Installation drawing
- Reconfiguration (Existing Vs. Proposed)
- Rendering – Photo realistic images
- VR – Yulio file
- Animation Video
- Fly-Through Video



# Design & Development Tools



**Riverstone**  
Technology **Unlimited**

## Partial List

A collection of software logos arranged in a light blue rounded rectangle. The logos include: Autodesk BIM 360, BIM Building Information Modeling, ProjectMatrix (Software for the Contract Furniture Industry), 2020 Technologies, SketchUp, AutoCAD (highlighted in a white rounded rectangle), YULIO VR, Autodesk 3ds Max, V-Ray 2.0, Twinmotion, and REVIT. The ENSCAPE logo is also present at the bottom right of the collection.

**CONFIGURA**  
Implementation  
Partner

**CET Developer**

  
**Catalogue  
Creator**

**CET Designer**

# Riverstone Advantage

- Technical expertise
- Domain knowledge
- Flexible engagement
- High responsiveness
- On time delivery
- Industry standards
- Mature processes
- Experienced team
- Rapid development
- Cost competitiveness



# Staff Augmentation/**Team Extension**

## Key Achievements

- Dedicated designers & project manager
- Collaborative project management
- Periodic reports & reviews
- Project workflow tools
- Adherence to deadline
- Strict confidentiality
- Secure work environment



# Ready to work together

**Submit projects / requests to:**

E-mail: [cadteam@riverstonetech.com](mailto:cadteam@riverstonetech.com)

**Priya Krishnamoorthy**

Program Manager

+1-925-360-5382

E-mail: [priya@riverstonetech.com](mailto:priya@riverstonetech.com)

**Sydney Martin**

Project Manager

+1-925-218-0669

E-mail: [sydney@riverstonetech.com](mailto:sydney@riverstonetech.com)



[www.riverstone.co](http://www.riverstone.co)